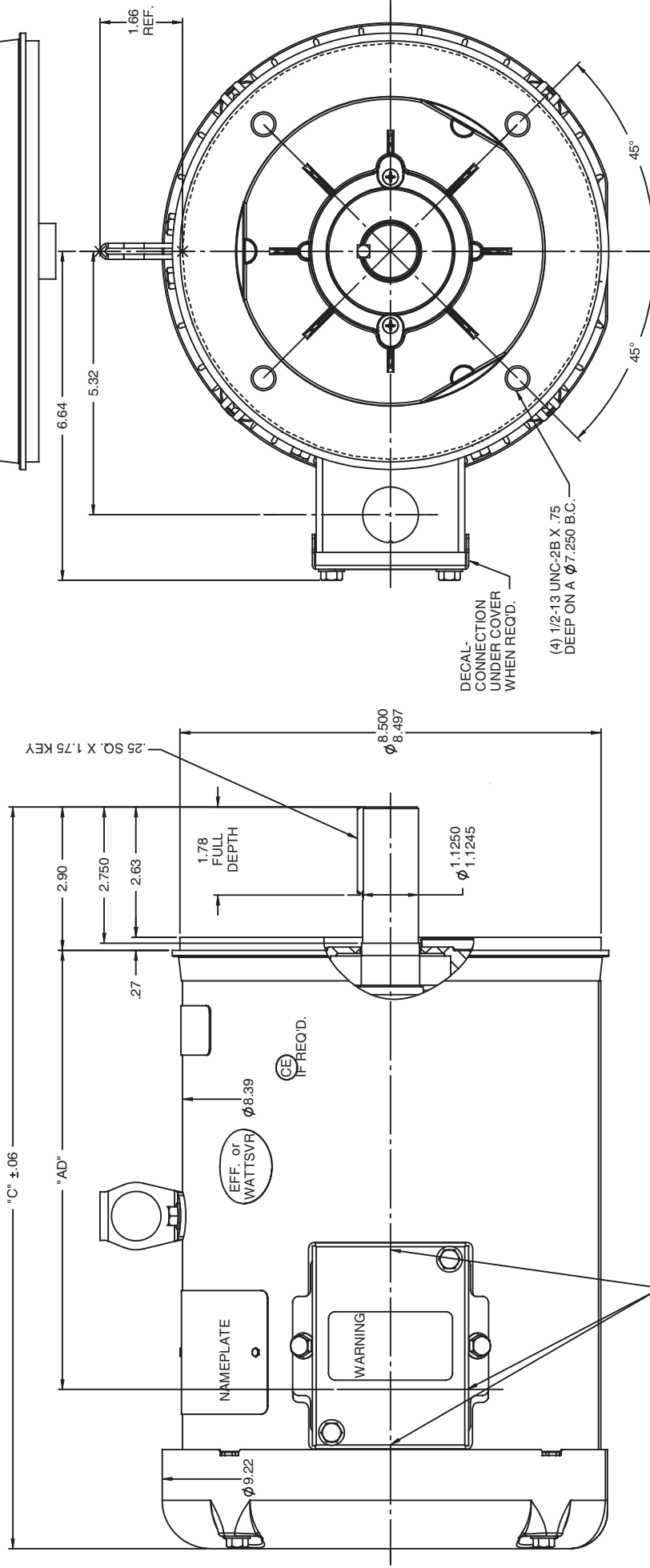


RBC PROPRIETARY AND CONFIDENTIAL INFORMATION
 This document is the property of REGAL BELOIT CORPORATION (RBC) including
 its subsidiaries and divisions and contains proprietary information of RBC. This document
 is loaned on the express condition that neither the information contained herein shall
 be disclosed, copied, or in any way made available to any third party without the
 written consent of RBC. This document shall be returned to RBC upon its request. This document may be subject to certain restrictions
 under U.S. export control laws and regulations.



GASKETS THROUGHOUT
 MAXIMUM FACE RUNOUT TO BE .004 T.I.R.
 MAXIMUM PILOT ECCENTRICITY TO BE .004 T.I.R.
 PERMISSIBLE SHAFT RUNOUT TO BE .002 T.I.R.

DASH NO.	"C"	"AD"
750	12.97	6.88
800	13.47	7.38
850	13.97	7.88
900	14.47	8.38
950	14.97	8.88
1000	15.47	9.38
1050	15.97	9.88
1100	16.47	10.38
1150	16.97	10.88

UNL. DIMENSIONS		TOLERANCES	
DEC	INCHES	XXX	±.005
XX	±.03	XXXX	±.005
XXX	±.005	XXXXX	±.0005
TITLE OUTLINE - 180TC FRAME		FINISH	
TEFC - "C" FACE		OF	
MATL. GENERAL PURPOSE		PAGE	
		REV	
BY & DATE		CHK LANG	
LST 12/17/2009		XX	
REVISION		NETWORK FILE NAME	
THIRD ANGLE PROJECTION		REV	
DRAWN RDW 4/18/07		035518	
CHK		DRAWING NO	
APPR SW 4/18/07		B	
SCALE 1:2		REV	
REF 035452			
FME			
PAGE			
OF			